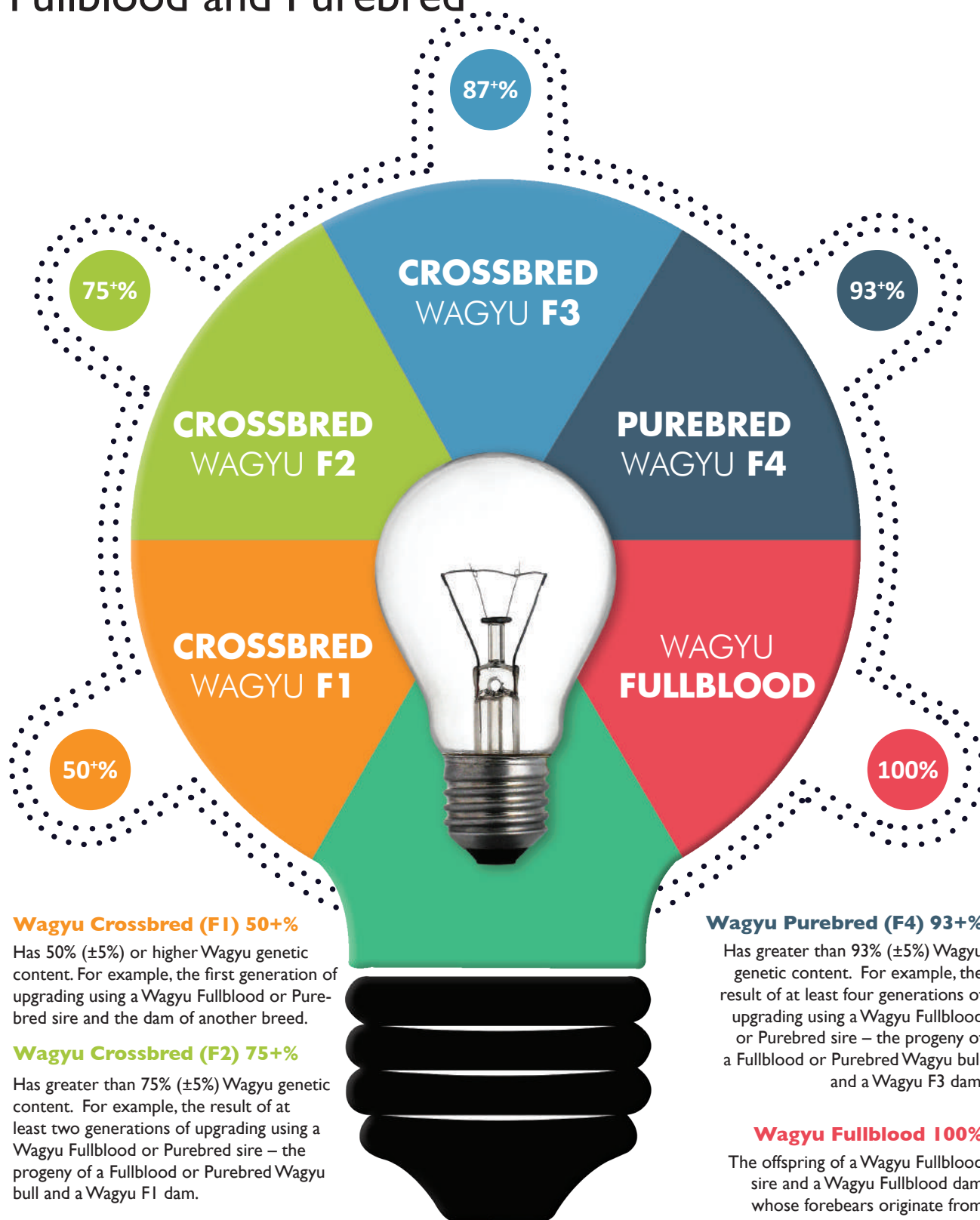


WAGYU GRADING-UP PROGRAM

Fullblood and Purebred



Wagyu Crossbred (F1) 50+

Has 50% ($\pm 5\%$) or higher Wagyu genetic content. For example, the first generation of upgrading using a Wagyu Fullblood or Purebred sire and the dam of another breed.

Wagyu Crossbred (F2) 75+

Has greater than 75% ($\pm 5\%$) Wagyu genetic content. For example, the result of at least two generations of upgrading using a Wagyu Fullblood or Purebred sire – the progeny of a Fullblood or Purebred Wagyu bull and a Wagyu F1 dam.

Wagyu Crossbred (F3) 87+

Has greater than 87% ($\pm 5\%$) Wagyu genetic content. For example, the result of at least three generations of upgrading using a Wagyu Fullblood or Purebred sire – the progeny of a Fullblood or Purebred Wagyu bull and a Wagyu F2 dam.

Wagyu Purebred (F4) 93+

Has greater than 93% ($\pm 5\%$) Wagyu genetic content. For example, the result of at least four generations of upgrading using a Wagyu Fullblood or Purebred sire – the progeny of a Fullblood or Purebred Wagyu bull and a Wagyu F3 dam.

Wagyu Fullblood 100%

The offspring of a Wagyu Fullblood sire and a Wagyu Fullblood dam whose forebears originate from Japan and whose pedigree shows no evidence of any crossbreeding.

When you start with F1 you parent verify the progeny to the Sire only. With F2, F3 and Purebred animals, members are required to parent verify both the sire and dam.