



Wagyu South Africa



The Wagyu Certified Beef Program

1. Introduction

The Animal Improvement Act of 1998 recognises the Wagyu Society of South Africa (WSA) to be the custodian of the Wagyu breed in South Africa. This includes its efforts to establish and ensure the integrity of its product.

Accordingly, WSA has established the South African Certified Wagyu Beef Program (CWB) which aims to ensure the integrity of the South African Wagyu beef supply chain and to assure the end customer of product reliability and quality.

2. Definition of Wagyu

The breed definition of Wagyu beef in South Africa is:

- Any animal sired by a WSA registered sire which is Fullblood or Purebred (see Appendix 1 for Wagyu Breed Trade Description).
- Minimum breed content level for Crossbred Wagyu (F1) - at least 50% Wagyu breed content with a maximum variation of 5%.

3. Definition of CWB is:

The definition of CWB is:

- Wagyu breeding as per the South African Wagyu breed definition.
- Minimum Marble Score 3.
- Hormone free.
- All males castrated prior to 5 months of age.
- Ethically produced.

4. Program

Purpose

CWB will :

- Ensure product integrity;
- Provide a consistent message to consumers regarding Wagyu beef as a product;
- Provide the Wagyu industry with the opportunity to market and brand the Wagyu product appropriately; and
- Protect the investment made by WSA members.
in all sectors of the Wagyu supply chain.

Wagyu supply chain

CWB will **assure Wagyu breed content** in all live animals in the Wagyu meat supply chain including:

- Seedstock producers;
- Commercial/emerging producers;
- Backgrounders; and
- Feedlots.

CWB will assure minimum carcass attributes for Wagyu meat in the Abattoir sector.



Wagyu South Africa



The Wagyu Certified Beef Program

CWB will assure Wagyu meat at wholesale and retail level to ensure final product integrity and customer confidence and loyalty in the Wagyu brand.

Licensing

Each sector of the supply chain will have its business entities licenced to comply with the CWB program at a small charge. The licence principles include:

- CWB licence certificate prominently displayed
- Only Fullblood and Purebred registered bulls used to produce progeny
- Each sector must only purchase Wagyu animals and/or beef from a CWB licenced entity and sell to a CWB licenced entity
- Commercial producers to tag all Wagyu slaughter progeny with CWB trademarked tags and supply a DNA sample (TSU) and a list of registered Fullblood/Purebred bulls used to produce the progeny to CWB. The tag identifiers will only be activated on the CWB database when the matching TSU is received by CWB.
- The CWB animal database will be accessible only to licensees.
- Feedlots to supply feedlot entry- and exit weights and -dates
- Abattoirs to supply live animal tag/body number linkage and carcass attributes of:
 - Carcass Weight
 - Marble Score, or Marble Percentage if camera available
 - Eye Muscle Area, if camera available
 - Marbling Fineness, if camera available
- Wholesalers will only procure Wagyu products from CWB licenced abattoirs
- Retailers will only procure Wagyu products from CWB licenced abattoirs and/or wholesalers
- Licensees may use the CWB trademarked logo in their marketing with CWB specific approval *e.g.* CWB produced signage
- CWB will make the full list of licensees publically available
- Complimentary Commercial Membership with WSA if not already a member.

Fees and charges

CWB will only apply charges to:

- Commercial producer – for the purchase of the tag bundle (matching visual tag, RFID button tag, Tissue Sampling Unit or TSU) from CWB for every CWB animal
- Abattoir – for payment per CWB certified carcass. The Certification Fee will be in the order of 1% of carcass value (eg. 400 kg carcass @ R100/kg = R40,000. 1% is R400) and will be based on the need for CWB to fund the following functions:
 - Supply chain audit
 - Data collection
 - Loading data for inclusion in Wagyu genetic analysis
 - ABRI fees
 - Data feedback to all participants in the value chain
 - CWB brand marketing
 - Administration.

CWB will offer value-added services and marketing products at a fee *e.g.* metal gate signs carrying the logo and a statement such as “Proudly producing Certified Wagyu Beef”.



Wagyu South Africa



The Wagyu Certified Beef Program

Supply chain audit

CWB will audit the Wagyu supply chain as follows:

- Commercial Producer – random 100% physical inspection to ensure all CWB identified animals are CWB tagged and TSU's have been submitted to CWB to activate the tags on the CWB database. Minimum 5% sire validation through genomic testing of the TSU supplied DNA.
- Feedlot – random physical inspection to ensure all CWB fed animals are CWB tagged and a minimum 5% check on tags to ensure they are active in the CWB database. No use of hormones or disallowed feed products on CWB animals.
- Abattoir – random physical inspection to ensure all CWB lairage animals are CWB tagged and a minimum 5% check on tags to ensure they are active in the CWB database. Correct matching of CWB ear tag to body number. Minimum 5% check on CWB carcasses to ensure minimum Marble Score 3. CWB logo correctly displayed on all Wagyu vacuum packs and boxes and on all beef sold as carcasses or part carcasses.
- Wholesaler – random physical inspection of cool rooms to ensure all Wagyu beef is CWB. Random sample of meat offered as CWB to be genomically tested for minimum Wagyu breed content. CWB logo is correctly displayed on marketing materials.
- Retailer (Butchers and Restaurants) – random physical inspection of cool rooms to ensure all Wagyu beef is CWB. Random sample of meat sold and/or served as CWB to be genomically tested for minimum Wagyu breed content. CWB logo is correctly displayed on menus and other marketing materials.

Data collection and storage

CWB will collect and store data as follows:

- CWB tag bundles sent to commercial producers will be registered in the CWB register on ILR2
- When the TSU is returned to CWB with the DNA sample enclosed it will be:
 - Considered for sire validation as part of the 5% audit check and if selected, sent to the DNA service provider for sire validation and the TSU returned to CWB
 - Stored in the CWB TSU storage unit for subsequent testing as required. CWB retains the right to SNP genotype and test the DNA sample at its sole discretion.
- As the technology develops, the licenced commercial producers or feedlots may purchase a SNP genotype and performance prediction of an animal
- CWB will collect feedlot and carcass performance data and store in ILR2 for input to Wagyu BREEDPLAN as follows:
 - Feedlots to supply feedlot entry- and exit weights and -dates
 - Abattoirs to supply live animal tag/body number linkage and carcass attributes of:
 - Carcass Weight
 - Marble Score, or Marble Percentage if camera available
 - Eye Muscle Area, if camera available
 - Marbling Fineness, if camera available

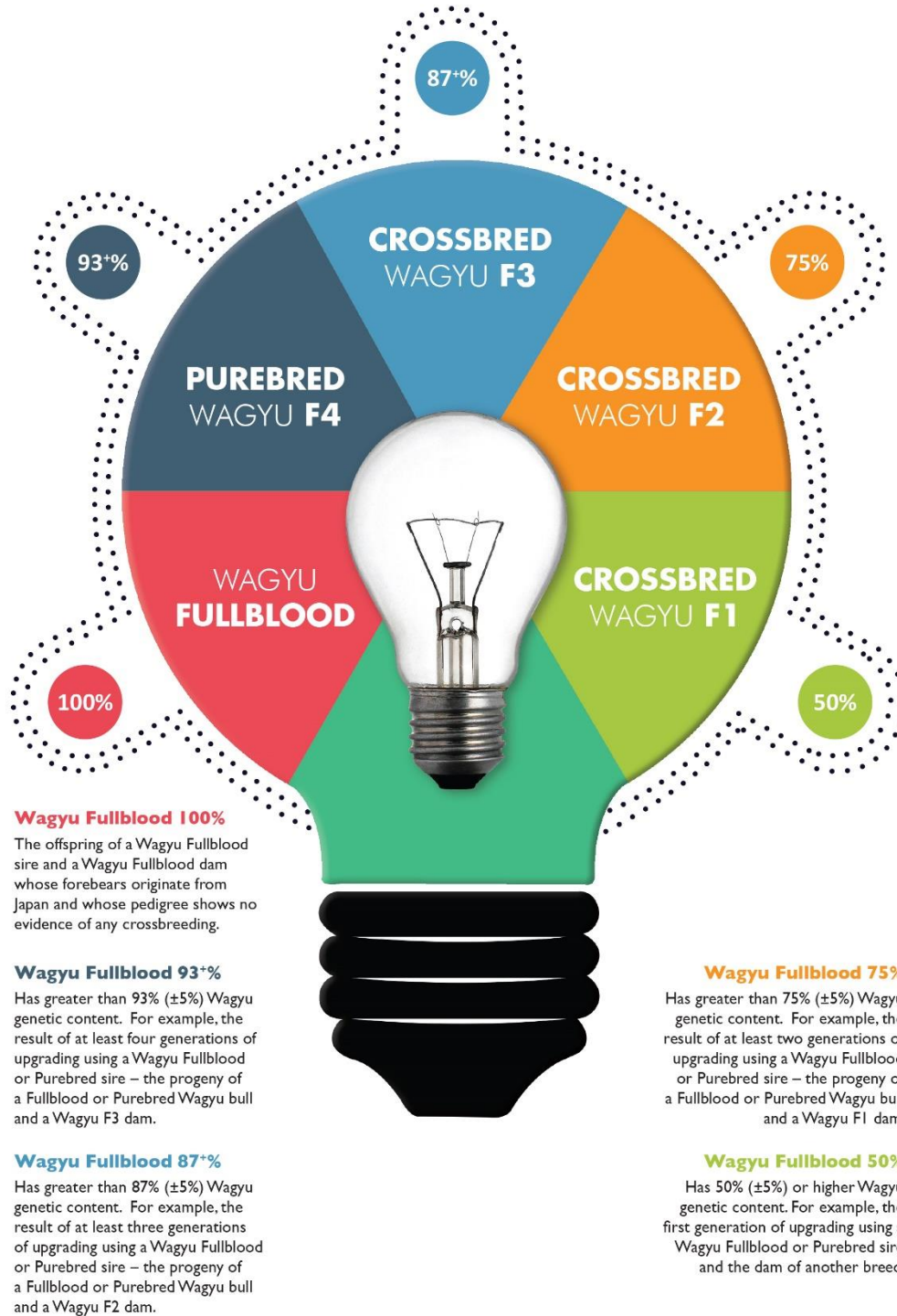
The Wagyu Certified Beef Program

This is diagrammatically stated as follows:



The Wagyu Certified Beef Program

Appendix 1 Wagyu Breed description



Wagyu Fullblood 100%

The offspring of a Wagyu Fullblood sire and a Wagyu Fullblood dam whose forebears originate from Japan and whose pedigree shows no evidence of any crossbreeding.

Wagyu Fullblood 93%+

Has greater than 93% (±5%) Wagyu genetic content. For example, the result of at least four generations of upgrading using a Wagyu Fullblood or Purebred sire – the progeny of a Fullblood or Purebred Wagyu bull and a Wagyu F3 dam.

Wagyu Fullblood 87%+

Has greater than 87% (±5%) Wagyu genetic content. For example, the result of at least three generations of upgrading using a Wagyu Fullblood or Purebred sire – the progeny of a Fullblood or Purebred Wagyu bull and a Wagyu F2 dam.

Wagyu Fullblood 75%

Has greater than 75% (±5%) Wagyu genetic content. For example, the result of at least two generations of upgrading using a Wagyu Fullblood or Purebred sire – the progeny of a Fullblood or Purebred Wagyu bull and a Wagyu F1 dam.

Wagyu Fullblood 50%

Has 50% (±5%) or higher Wagyu genetic content. For example, the first generation of upgrading using a Wagyu Fullblood or Purebred sire and the dam of another breed.